

LYTE SHIPPING LIMITED

Worldwide Air & Sea Freight Logistics Solution...

PROFILE



WWW.LYTESHIPPING.COM

With offices in: 

WORLDWIDE AIR & SEA FREIGHT LOGISTICS SOLUTION...

CONTENTS

- 01** About Us
- 02** Mission
- 03** Vision
- 04** Our Services
- 05** Our Clients/Partners
- 06** Contact



ABOUT **LYTE SHIPPING**

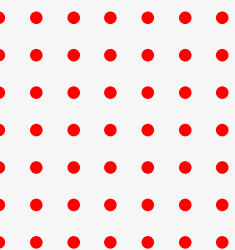
WWW.LYTESHIPPING.COM



Lyte Shipping Limited is an international freight forwarder that specializes in transporting goods all around the World. Together with our global network of partners, we create and deploy industry-leading innovations.

We provide operational excellence to provide feasible answers to the most difficult supply chain challenges with over 100+ committed professionals working across the world. As a result, the majority of our clients see us as one of the finest logistics businesses in Nigeria.

Our team of specialists that are passionate about their work allows us to focus on offering quality and value to our clients. We are completely devoted to exceeding our customers' expectations. Lyte Shipping is a contemporary shipping firm in Nigeria.



Our Values



Mission

Connecting people, Companies, Businesses, and communities to a better future and opportunities – through LOGISTICS.



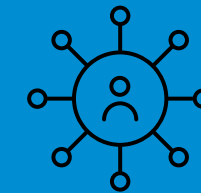
Vision

To become the world's preferred Bridging/Supply chain logistics company – applying insight, service quality and innovations to create sustainable growth for companies, Business and society.



Motto

Delivering at the Speed of Light



Core Values

- Transparency,
- Professionalism,
- Excellence

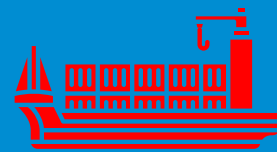


OUR SHIPPING SERVICES



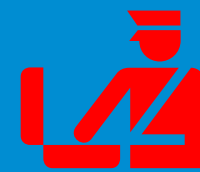
AIR FREIGHT

Through partnerships with top airlines, we offer affordable air freight forwarding services globally, providing cost-effectiveness and cargo monitoring to customers in major cities and countries.



SEA FREIGHT

Lyte Shipping uses international collaborations to offer top-notch sea freight services from major seaports globally and maintain positive relationships with key carriers for affordable rates.



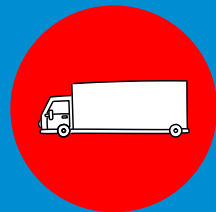
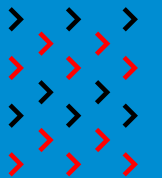
CUSTOMS BROKER

Lyte Shipping excels in local customs clearance services, consistently demonstrating expertise and understanding of key regulatory requirements



OTHER SERVICES

WWW.LYTESHIPPING.COM



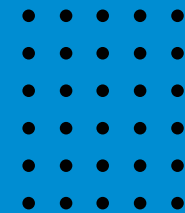
HAULAGE

Choose us for reliable and efficient haulage. Our experienced team and modern fleet ensure timely, secure transport. We offer customized, flexible, and cost-effective solutions, enhancing your supply chain with a proven track record of excellence.



WAREHOUSING

Offering bonded and non-bonded warehousing solutions, we are a top-quality, safety-focused 3PL provider. Our experienced team delivers customized, secure storage for time-sensitive and general cargo, available any time.



WHY **LYTE**?

SAFE AND SECURE:

You gain from our expertise in providing practical solutions to the intricate global supply chains of some of the largest organizations in the world.

FAST DELIVERY:

Every innovation, whether it entails a straightforward addition to our Air and Ocean Freight goods or a breakthrough in warehousing, benefits you.

24/7 SUPPORT:

This information illustrates why the staff at Lyte Shipping is so exceptional and is prepared to put their enthusiasm for finding solutions to work for your company.



CUSTOMS BROKER SERVICES

Nigeria Customs require some clearing documents you need to be able to import goods in Nigeria.

We can help you with all the different customs clearing documents you need, and how they work, in order to clear your goods through Nigerian Customs

Successfully clearing goods through Nigerian Customs requires several customs clearing documents. In this article, we will discuss the documents you need to give the Clearance Vendor and how they work.



SON Conformity Assessment Program Certificate (SONCAP):

To clear goods in Nigeria, importers are required by law to provide a Product Certificate (PC) and a SONCAP Certificate (SC). These certificates are needed for every consignment of regulated products by SON approved inspection agencies, like Cotecna.

Form M:

Importers also require a Form M to clear their goods. To open a Form M, you must select a dealer bank and provide them with the following documents: the Pro forma Invoice, Marine Insurance Certificate and a (SON) Product Certificate. The bank will then use these documents to open and issue a Form M.

Material Safety Data Sheet (MSDS):

MSDS is a document that lists the occupational safety and health of various substances and products. MSDS information may include details like how to safely use the product, potential risks and spill-handling procedures. This document is required for the importation of certain chemical products.

DAP (DELIVERED AT PLACE):

Delivered at Place DAP named place Incoterms® 2010 — This term may be used whatever mode or modes of transport will be used.

DAT (DELIVERED AT TERMINAL):

Delivered at Terminal DAT named place Incoterms® 2010 — This term may be used regardless of the mode or modes of carriage to be used.



NAFDAC PERMIT:

NAFDAC regulated products like certain food items and regulated chemicals require a NAFDAC Permit for customs clearance.

Clearing imported goods through Nigerian Customs can be difficult and time-consuming. This is one of the reasons why we assign a dedicated agent to guide our clients through the certification process. If you would like to learn more about exporting to Nigeria or make a commitment free enquiry, please contact us.

PRE-ARRIVAL ASSESSMENT REPORT (PAAR):

PAAR is an acronym for Pre-Arrival Assessment Report. The Nigerian Customs service requires an approved and valid PAAR for cargo clearing. The PAAR is processed through the Nigeria Single Window Trade Portal. However, the applicant's dealer bank, or the bank that issued the Form M, processes the PAAR since the single window is not accessible to individuals.

In addition, regulation requires that the exporter send a set of original shipping documents to the bank for PAAR processing. Depending on the bank, this may take some time consequently lengthening the clearing process.

Finally, the bank will attach the scanned SONCAP Certificate and shipping document copies to the application and submit everything to the Nigeria Customs Services (NCS). The NCS will then review, register, query or reject the PAAR application.



Best-in-Class Warehousing Solutions

Bonded & Non-Bonded Warehousing Solutions. We are a renowned, quality-driven; safety-oriented Third-Party Logistics (3PL) provider that delivers customized warehousing solutions that align with your supply chain requirements.

We take pride in our pedigree of excellence and our highly experienced team of dedicated professionals who are always well positioned to serve you at any time and any day of the week.

From secured storage of time-sensitive cargo, general cargo containers, and (LCL/Groupage) shipments, we are your best choice.



CLIENT'S TESTIMONIAL



"I am so happy I used Lyte Shipping for my business. Exceptional Service"

- James Chidera
Customer

MEMBER OF:

1



2



3



4



PARTNERS

1



2



3



4



5



6



7



8



9



10



11



12



CONTACT US



Lagos Office:
6 Joy Avenue, opp Pefti Cinema, Ajao Estate, Airport
Road, Lagos State, Nigeria.



China Office:
No. 38, Leyangyang Road, Panyu District, Guangzhou,
No. 502, Second Ladder, Tianfeng Building 7



Dubai Office:
Street 33 Deira building 6, 2nd floor Deira Dubai

Interested in working with us?

info@lyteshipping.com

Phone Numbers

[+234\(0\)8154470000](tel:+234(0)8154470000)